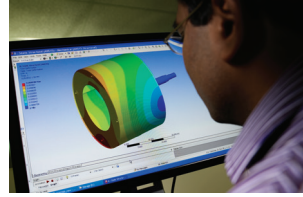


# WARRANTY INFORMATION



## Limited Warranty - Coverage and Length\*

### COMMERCIAL AUTOMATIC TOPLOAD WASHER

This limited warranty is extended to the first owner or by warranty transfer to a new owner of an Alliance Laundry Systems commercial automatic washer. We will provide a free replacement for any of the following parts which fails as a result of a defect in material or workmanship for the period shown below from the date of original installation:

- **THREE** years (36 months) limited warranty on complete washer
- **FIVE** years (60 months) limited warranty on transmission assembly
- **FIVE** years (60 months) limited warranty on base and cabinet assembly against rust and corrosion from the inside out
- **LIFETIME** limited warranty on the stainless steel wash tub against rust and corrosion

### COMMERCIAL DRYER, STACKED DRYER, COMMERCIAL TUMBLER OR DRYING TUMBLER

This limited warranty is extended to the first owner or by warranty transfer to a new owner of an Alliance Laundry Systems commercial dryer, commercial tumbler or drying tumbler. We will provide a free replacement for any of the following parts which fails as a result of a defect in material or workmanship for the period shown below from the date of original installation:

- **THREE** years (36 months) limited warranty on complete drying tumbler
- **FIVE** years (60 months) limited warranty on base and cabinet assembly against rust and corrosion from the inside out (small dryer only)

### HORIZON FRONTLOAD WASHERS OR STACK WASHER/DRYER+

This limited warranty is extended to the first owner or by warranty transfer to a new owner of an Alliance Laundry Systems commercial frontload washer, stacked dryer or washer/dryer. We will provide a free replacement for any of the following parts which fails as a result of a defect in material or workmanship for the period shown below from the date of original installation:

- **THREE** year (36 months) limited warranty on complete frontload washer and dryer
- **FIVE** year (60 months) limited warranty on the bearings and bearing seal assembly
- **FIVE** years (60 months) limited warranty on base and cabinet assembly against rust and corrosion from the inside out
- **LIFETIME** limited warranty on the stainless steel wash basket against rust and corrosion

### COMMERCIAL WASHER-EXTRACTOR (SOFTMOUNT AND HARDMOUNT)\*

This limited warranty is extended to the first owner or by warranty transfer to a new owner of an Alliance Laundry Systems commercial frontload washer-extractor (softmount and hardmount models). We will provide a free replacement for any of the following parts which fails as a result of a defect in material or workmanship for the period shown from the date of original installation:

- **THREE** year (36 months) limited warranty on complete washer-extractor
- **FIVE** year (60 months) limited warranty for On-Premises Laundry applications (hardmount and softmount washer-extractor) on the frame, cylinder, shaft assembly, bearings and bearing seal assembly.
- **TEN** year (120 months) limited, transferable warranty for Vended (hardmount washer-extractor) on the frame, cylinder, shaft assembly, bearings and bearings seal assembly.

## Limited Warranty - Not Covered

We will not provide a replacement of any part which fails for reasons other than defective material or workmanship. This includes, but is not limited to, failure as a result of abuse, misuse, improper installation and transportation damage. We will not pay labor and transportation charges incurred in the replacement of any part. We are not responsible for any consequential and incidental damages resulting from any malfunction. Refer to warranty bond for specifications.

### LABOUR WARRANTY

Speed Queen Equipment Sales labour warranty of 12 months from date of invoice applies.

### HOW TO OBTAIN REPLACEMENT PARTS UNDER THIS LIMITED WARRANTY

Parts which fail within the warranty period must be ordered from Speed Queen Equipment Sales, Ph: (03) 9495 1300, Fax: (03) 9495 1600. Proof of purchase, model number, serial number and defective part are required in order to obtain credit.

\* See warranty bond for the details and applicable models and countries.

+ Horizon frontload washer, stacked washer/dryer, installed in On-Premises Laundry (OPL) applications are covered under a one-year (12 months) parts only warranty on entire product. Examples of OPL installations include, but are not limited to, prisons, detention centers, military bases, salons, hotels & fitness centers.