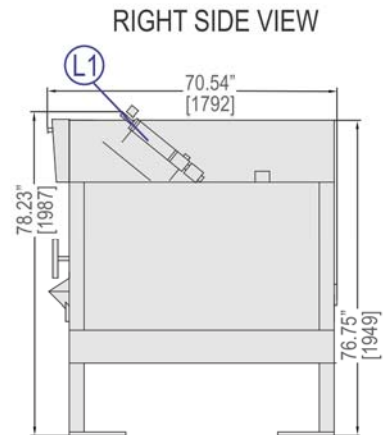
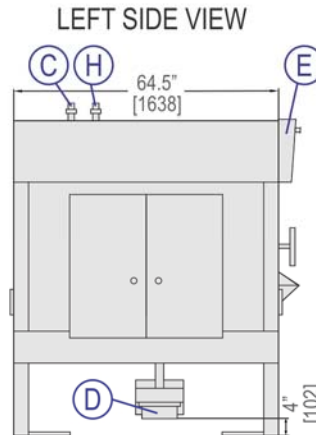
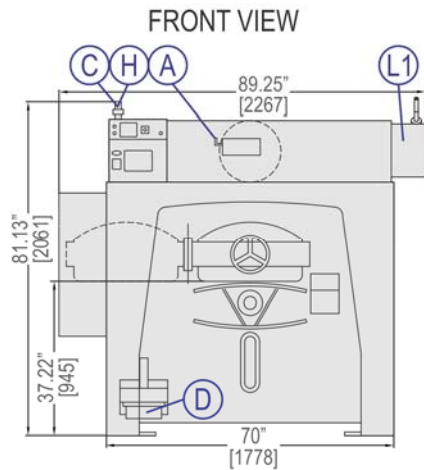


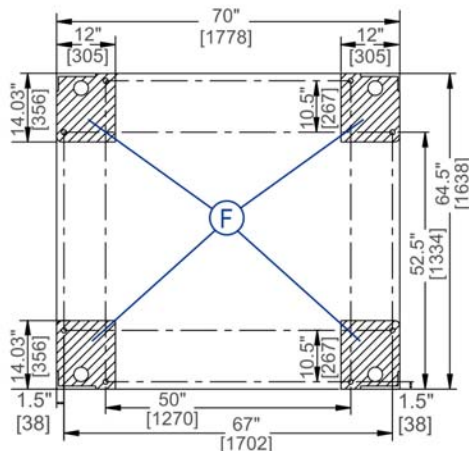
# 42044 WR2 / WR3

220-245 LB. (100-111KG) CAPACITY  
DIVIDED-CYLINDER WASHER-EXTRACTOR

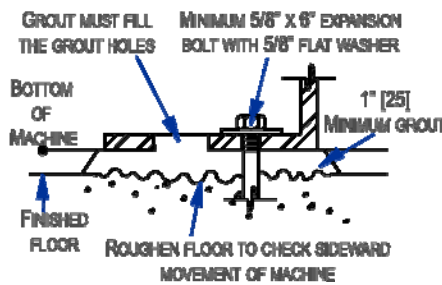
## SPECIFICATION SHEET



### FOUNDATION VIEW



### ANCHORING DETAIL



### LEGEND

A	Compressed air inlet connection .25" (6 mm) NPT
C	Cold water inlet 1.5" (38 mm) NPT
D	Drain valve 8" (203 mm) diameter
E	Electrical connection
F	Anchor pads, bolt holes 1.06" (27 mm)
H	Hot water inlet 1.5" (38 mm) GHT
L1	Peristaltic supply connection .5" (13 mm) NPT

### MECHANICAL SPECIFICATIONS

Capacity – lb. (kg)	220-245 (100-111)
Cylinder Diameter x Depth – in. (mm)	42 x 44 (1067x1118)
Cylinder Door Area – sq. in. (sq. cm)	224 (1445)
Cylinder Volume – cu. ft. (L)	35 (999)
Machine Dimensions (W x D x H) – in. (mm)	89.25 x 70.54 x 81.13 (2267 x 1792 x 2061)
Shipping Dimensions* (W x D x H) – in. (mm)	76 x 91 x 89 (1930 x 2311 x 2260)
Motor – HP (kW)	25 (18.64)
Wash Speed – RPM	25-35
Distribution Speed – RPM	52
Extraction Speeds – RPM	240-710
Extraction G-Force	300
Static Weight – lb. ◇*	7294 (3309)
Max. Dynamic Load RMS – lb ◇*	908.46
Frequency (Hz)*	11.67
Water Pressure <i>(Required)</i> – psi (bar)	30-65 (2.06-4.48)
Water Valve Cv Rating	75 (283.9)

\*Contact factory for WR3 details.

### ELECTRICAL SPECIFICATIONS

Voltage	Running Amps	Fuse (Amps)	Circuit Breaker (Amps)
208/3/60	39	FRN50	100
220/3/50-60	38	FRN50	90
240/3/60	35	FRN45	80
380/3/50-60	24	FRS30	60
400/3/50	23	FRS30	50
415/3/50	22	FRS25	50
480/3/60	20	FRS25	40
600/3/60	16	FRS20	35

See Fuse and Wire Size manual MAEFUSE1BE for safety information.

▼ See dimensional drawing for complete details.

◇ It is the sole responsibility of the owner/user to assure that the floor and/or any other supporting structure exceeds not only all applicable building codes, but also that the floor and/or any other supporting structure for each washer-extractor or group of washer-extractors has sufficient strength and rigidity (i.e., a natural or resonant frequency many times greater than the rotational machine speed with a reasonable factory of safety) to support the weight of all the fully loaded machine(s) including the weight of the water and goods, and including the published 360° rotating sinusoidal RMS forces that are transmitted by the machine(s). Contact the factory for additional machine data for use by a structural engineer.



# 42044 WR2 / WR3

220-245 LB. (100-111KG) CAPACITY  
DIVIDED-CYLINDER WASHER-EXTRACTOR

## SPECIFICATION SHEET

### Standard Features:

- Split pocket cylinder
- AUTOSPOT™ cylinder positioner
- MilTouch-EX™ touchscreen controller
- Color graphic display
- Single-motor inverter drive
- Air-operated valves
- Programmable overnight bath soak
- Programmable water temperature for each bath
- Programmable Air-Operated steam injection
- Hydro-Cushion™ suspension
- Spherical roller bearings
- Large cylinder perforations
- Fifteen (15) liquid chemical injection ports
- Control reads in English/second language
- 5-year limited warranty on frame, cylinder & shell

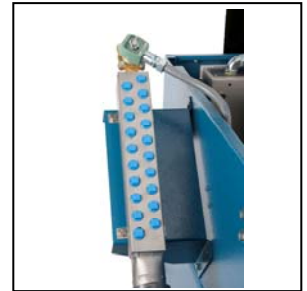


### Optional Features:

- 5 compartment flushing supply injector
- Prison package
- Rotated drain 90°

### Why Purchase Milnor?

- HYDRO-CUSHION™ is a unique suspension system utilizing a rugged steel frame and spring-hydraulic units with heavy fluid damping. **BENEFIT: Reduces objectionable vibration.**
- MilTouch-EX™ touch screen control, utilizing resistive touch screen technology and full VGA resolution, has a clear and informative display which shows current machine status info including total formula time and time elapsed. Formulas can be developed on a PC, saved to USB external memory and uploaded with a screen touch. Controller also provides intuitive fault diagnosis and relevant troubleshooting suggestions. **BENEFIT: Fewer operator errors.**
- 322-G high extract provides excellent moisture removal. Lower extract speeds are available for uniforms, delicate textiles and blended fabrics. **BENEFIT: Better extraction saves dryer fuel.**
- 20 liquid chemical ports, 15 signals, and optional 5 compartment supply injector. **BENEFIT: Promotes consistency and allows flexibility.**
- Larger cylinder perforated-area generates *better wash quality, better rinsing and better extraction.* **BENEFIT: Better extraction saves dryer fuel.**
- Faster process times reduce fabric wear, promoting *longer linen life!* **BENEFIT: Saves linen replacement costs.**
- Superior product support through local, highly-skilled dealers. **BENEFIT: Faster repairs mean less downtime.**



Safe chemical injection



Superior cylinder design



MilTouch-EX™  
touchscreen control

Contact Milnor for your local, authorized dealer:

Pellerin Milnor Corporation  
PO Box 400 • Kenner, LA 70063  
t: 504-467-9591 • f: 504-468-3094

