

48040 M7K

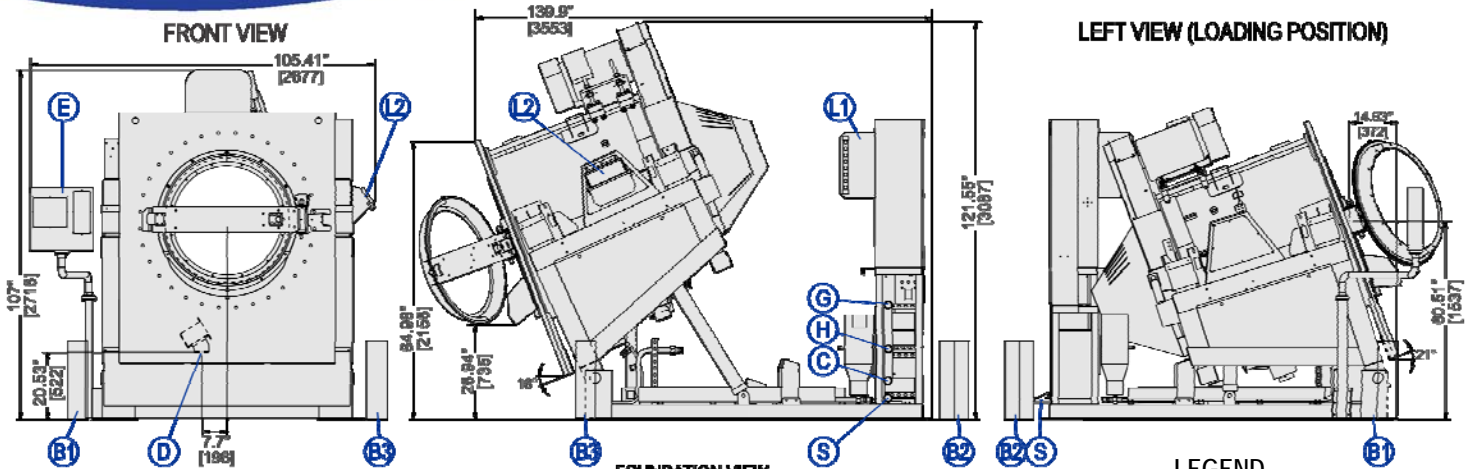
275 LB. (125KG) CAPACITY
SUSPENDED WASHER-EXTRACTOR

SPECIFICATION SHEET

RIGHT VIEW (UNLOADING)

FRONT VIEW

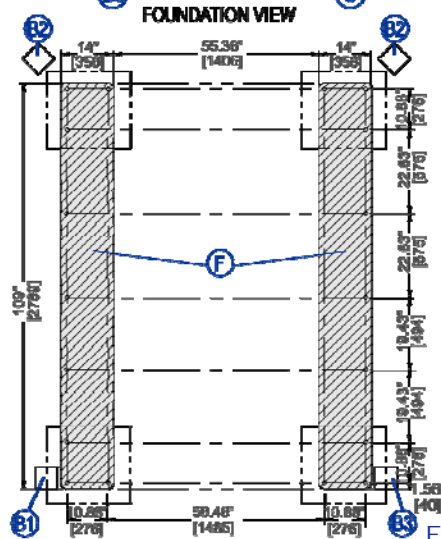
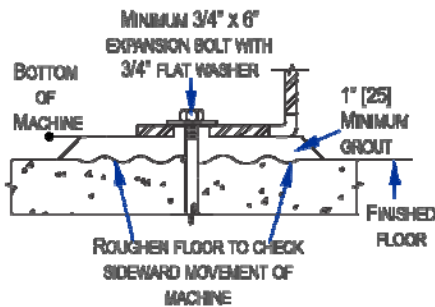
LEFT VIEW (LOADING POSITION)



FOUNDATION VIEW

LEGEND

ANCHORING DETAIL



A	Air inlet, 0.25" (6 mm)
B1	Safety light screen emitter
B2	Safety light screen reflector
B3	Safety light screen receiver
C	Cold water inlet, 1.5" (38 mm) NPT
D	Drain valve, 4.5" (114 mm) diameter outlet
E	Main electrical connection
F	Foundation pads
H	Hot water inlet, 1.5" (38 mm) NPT
L1	8 port peristaltic inlets (standard)
L2	Dry supply
S	Steam inlet, 1.25" [31 mm]

MECHANICAL SPECIFICATIONS

Capacity – lb. (kg)	275 (125)
Cylinder Diameter x Depth – in. (mm)	48 X 40 (1219 x914)
Door Opening – in. (mm)	38 (965)
Cylinder Volume – cu. ft. (L)	42 (1188)
Fully Extended Machine Dimensions (W x D x H) – in. (mm)	105.41 x 139.9 x 121.55 (2677 x 3553 x 3087)
Shipping Dimensions (W x D x H) – in. (mm)	90 x 110 x 94 (2286 x 2794 x 2387)
Motor – HP (kW)	25 (18.64)
Wash Speeds – RPM	30-38
Distribution Speed – RPM	66
Extraction Speeds – RPM	200-664
Extraction G-Force	300
Water Pressure (Required) – psi (bar)	10-75 (0.69-5.17)
Water Valve Cv Rating	110 (416.4)
Minimum Recommended Distance Between Machines – in. (mm)	24 (609)
Static Weight – lb. (kg) ◇	10111 (4596)
Max. Dynamic Load RMS – lb. (kg) ◇	825 (375)
Frequency (Hz)	11.06

ELECTRICAL SPECIFICATIONS

Voltage	Running Amps	Fuse (Amps)	Circuit Breaker (Amps)
208/3/60	62	FRN75	75
220/3/50-60	60	FRN75	75
240/3/60	59	FRN75	75
380/3/50-60	33	FRS50	50
400/3/50	33	FRS50	50
415/3/50	33	FRS50	50
480/3/60	32	FRS50	50
600→480/3/60	32	FRS50	50

See Fuse and Wire Size manual MAEFUSE1BE for safety information.

See dimensional drawing for complete details.

It is the sole responsibility of the owner/user to assure that the floor and/or any other supporting structure exceeds not only all applicable building codes, but also that the floor and/or any other supporting structure for each washer-extractor or group of washer-extractors has sufficient strength and rigidity (i.e., a natural or resonant frequency many times greater than the rotational machine speed with a reasonable factory of safety) to support the weight of all the fully loaded machine(s) including the weight of the water and goods, and including the published 360° rotating sinusoidal RMS forces that are transmitted by the machine(s). Contact the factory for additional machine data for use by a structural engineer.



48040 M7K

275 LB. (125KG) CAPACITY
SUSPENDED WASHER-EXTRACTOR

SPECIFICATION SHEET

Standard Features:

- MilTouch-EX™ control
- Programmable overnight bath soak
- Programmable water temperature for each bath
- Dynamically-tuned suspension system
- Spherical roller bearings
- High percentage of open area cylinder perforations
- Single motor inverter drive
- 16° Tilting forward and 21° backward
- Eight (8) liquid chemical injection ports
- Control reads in English/second language
- 5-year limited warranty on frame, cylinder & shell
- Removable hub for easy access to bearings
- Active balancing accommodates bulky items (mats and partial batches)

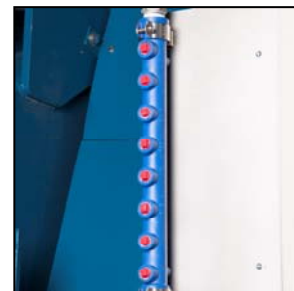


Optional Features:

- Reuse water inlet
- Load chute door
- Five compartment flushing injector
- Light curtain (required for manual and semi-automated operation)

Why Purchase Milnor?

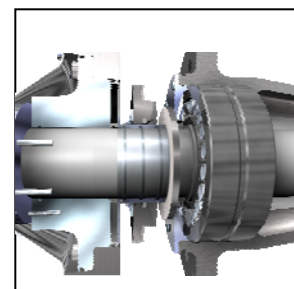
- 42 cu ft. (1188 L) cylinder allows for more goods to be processed at a time. **BENEFIT: Greater capacity leads to increased efficiency and less production hours.**
- MilTouch-EX™ Controller has intuitive fault diagnosis and relevant troubleshooting suggestions, which streamlines employee training and eliminates operator guesswork. Controller also provides diagnostic and error messages. Shortens training time of new employees. **BENEFIT: Fewer operator errors.**
- 300-G high extract provides excellent moisture removal. Lower extract speeds are available for uniforms, delicate textiles and blended fabrics. **BENEFIT: Better extraction saves dryer fuel.**
- Eight liquid chemical ports and fifteen signals. **BENEFIT: Promotes consistency and allows flexibility.**
- Larger cylinder perforated-area generates better wash quality, better rinsing and better extraction. **BENEFIT: Better extraction saves dryer fuel.**
- Faster process times reduce fabric wear, promoting longer linen life! **BENEFIT: Saves linen replacement costs.**
- Superior product support through local, highly-skilled dealers. **BENEFIT: Faster repairs mean less downtime.**



Safe chemical injection



Smooth, coiled rubber suspension system



Bearings have quadruple seal protection

Contact Milnor for your local, authorized dealer:

Pellerin Milnor Corporation
P.O. Box 400 • Kenner, LA 70063
t: 504-467-9591 • f: 504-468-3094

