



SINGLE STAGE EXTRACTION PRESS

FOR AUTOMATED CBW®/PBW™ BATCH WASHING SYSTEMS



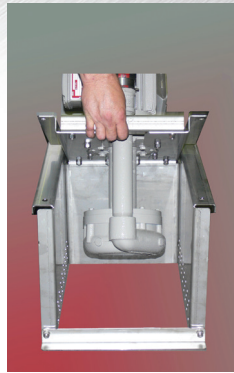
MP1656



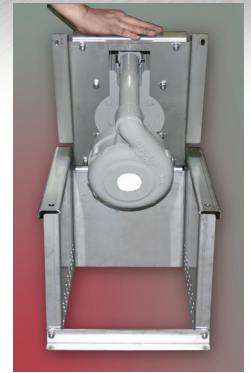
RUGGED, VERSA

Another extraction alternative for Milnor tunnel systems!

Milnor's single-stage membrane press makes it even easier to tailor a continuous batch system to your needs. You can meet production and space requirements in the way that suits you best.



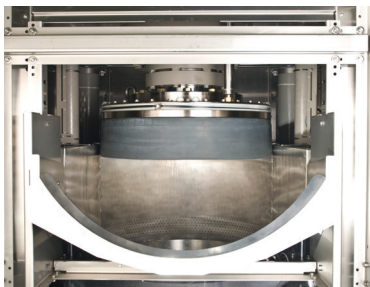
Designed for easy service: Hinged press water return pump simplifies press maintenance.



Extracts wide variety of goods.

This single-station press can process **goods that are 100% polyester, 100% cotton, and cotton-poly blends** effectively. Several features provide careful treatment while exerting pressure appropriate for the goods. To remove water pockets and minimize hydrobursting, the membrane can tamp the goods before it applies final pressure. Ram movement and pressure (up to 56 bar) are programmable.

Waterless membrane: This standard feature prevents puncturing and promotes longevity.



Single-stage press: This membrane press processes almost any type of goods in one station. It's a good choice when space is tight.

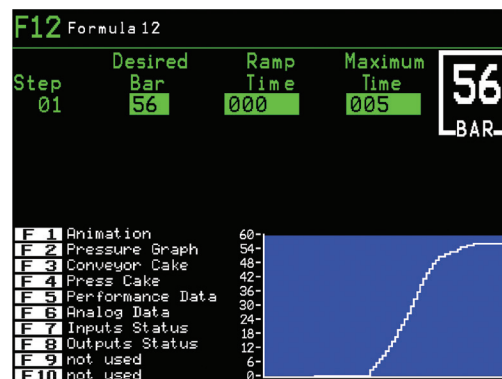


Hygienic Processing Environment.

Milnor's stainless steel cosmetics, antimicrobial paint for structural components, integrated press hood, and door-mounted positive ventilation fan promote a hygienic environment within the machine.

Saves space.

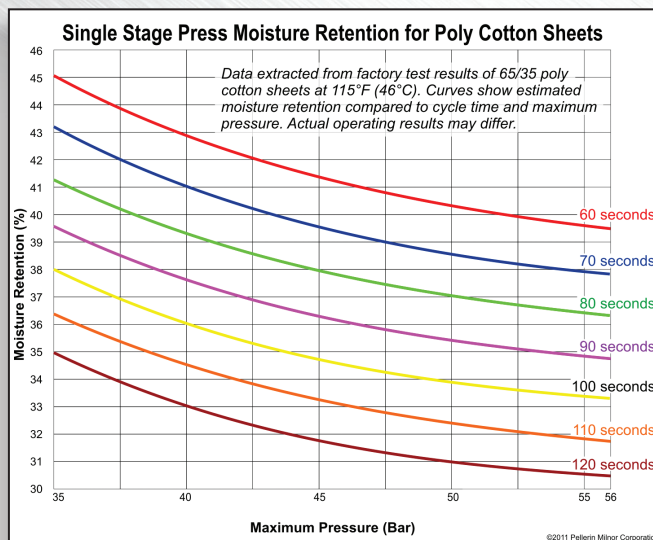
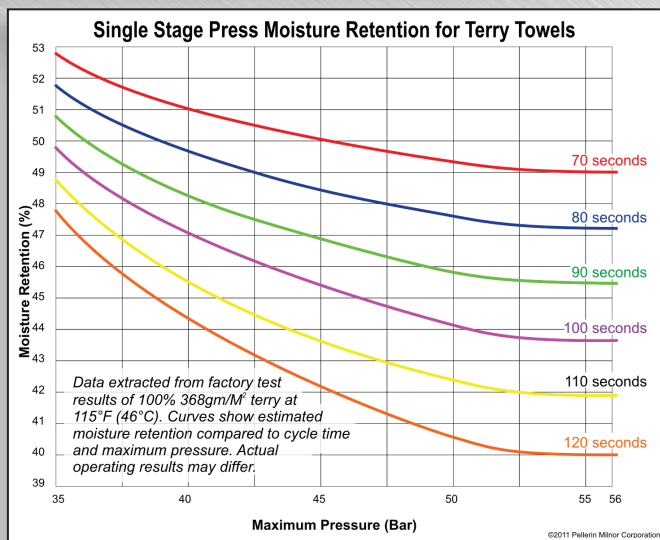
Compact design requires less space. The press can be ordered for **various installation arrangements** – in-line or 90° angle in either direction – to fit your laundry's size and shape.



Run Screen control.

Easy-to-read and easy-to-program. The operator can monitor the press in real time with this 10.4" LCD display.

ATILE, STRONG.



Moisture Retention: These graphs illustrate how much moisture can be extracted in terry towels and poly-cotton sheets in Milnor's presses. The more moisture removed, the more money you save in dryer fuel costs.

Ruggedly built.

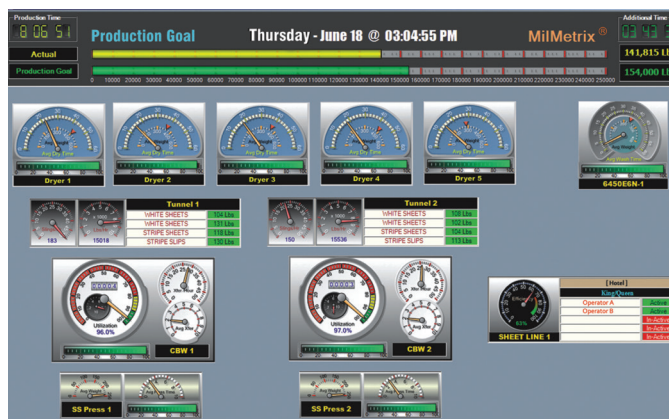
Rigid structure absorbs stress for long life. A thick, solid steel platform supports the hydraulic press cylinder and pressure system. Four steel columns use massive, specially designed locknuts to link the bottom plate to the platform. Elastomer-interfaced hydraulic connections prevent leaks. The standard hydraulic recirculation/cooling loop provides both optimum fluid filtration and **cooling for reliability and long life**. Easy cleaning helps enhance plant hygiene.

Control is versatile, simple.

Proven microprocessor control provides 16 programmable extraction sequences. 10.4" graphic display tells operating status — including time remaining in extraction cycle, loading status, and status for receiving another load. The display also shows production and accounting data, plus fault recognition with error statements. Control components are interchangeable with those of other Milnor machines, to simplify inventory. Control can be linked to the Mildata[®] computer system for central programming, data collection, and system monitoring.

It's productive and efficient.

Stainless steel press basket accommodates up to 110 lb. (50 kg), 150 lb. (68 kg), or 260 lb. (118 kg) of standard cotton sheets. The basket's large diameter keeps the cake flat for **fast drainage**. Extracted water is pumped to the CBW washer for reuse. After completion of a cycle, two hydraulic cylinders lift the basket, and an integral conveyor (which helps keep the cake intact) moves the cake to the next position for conditioning or drying. A special unloading sequence prevents the cake from sticking.



*XML compatible

SPECIFICATIONS

	MPI540		MPI556		MPI640		MPI650		MPI656		MPIA50	
Batch Size - lb. (kg)	110	(50)	110	(50)	150	(68)	150	(68)	150	(68)	260	(118)
Nominal cake diameter - in. (mm)	36	(914)	36	(914)	39.37	(1000)	39.37	(1000)	39.37	(1000)	48	(1219)
Standard min. cycle time** - secs	75	-	75	-	75	-	75	-	75	-	90	-
Maximum pressure - psi (bar)	580	(40)	812	(56)	580	(40)	725	(50)	812	(56)	725	(50)
Hydraulic pump motor - HP (kW)	15	(11.19)	15	(11.19)	15	(11.19)	30	(22.37)	30	(22.37)	40	(29.83)
Recirculation motor - HP (kW)	1.5	(1.12)	1.5	(1.12)	1.5	(1.12)	1.5	(1.12)	1.5	(1.12)	1.5	(1.12)
Conveyor motor - HP (kW)	1	(.75)	1	(.75)	1	(.75)	1	(.75)	1	(.75)	1	(.75)
Overall width* - in. (mm)	104.25	(2648)	104.25	(2648)	104.25	(2648)	104.25	(2648)	104.25	(2648)	116.94	(2970)
Overall depth* - in. (mm)	93.06	(2363)	93.06	(2363)	93.06	(2363)	93.06	(2363)	93.06	(2363)	115.03	(2922)
Overall height* - in. (mm)	150.25	(3816)	151.75	(3854)	151.75	(3854)	153.75	(3905)	153.75	(3905)	179.38	(4556)
Gross weight* - lb. (kg)	24,680	(11195)	28,725	(13030)	29,140	(13218)	33,140	(15032)	33,310	(15109)	49,680	(22534)

**Special options required for 90 seconds or faster transfer times.

Specifications and appearance subject to change without notice. Contact factory for acoustics data and exact specifications. All dimensions are Center discharge models unless otherwise noted. *Approximate, with standard accessories.

Another Milnor extraction option:



Centrifugal extractor: Excellent for garments, dust mats, 100% polyester textiles (including surgery and barrier cloth items), plus cottons and blends.

Also available: Ram Command™ press ram option for single stage presses:

This feature enhances the control over the ram's descent into the can. It also allows the ram to descend at a slower rate (programmable for goods type) when pressing delicate goods. For example, high thread-count cotton sheets or barrier material that are subject to fabric microbursting would benefit from this unique feature.

Material Handling Devices also available:

